



INKOMATI-USUTHU
CATCHMENT MANAGEMENT AGENCY



ORGANIZATIONAL OVERVIEW

Mr LC Mohalaba
CEO: IUCMA

PURPOSE

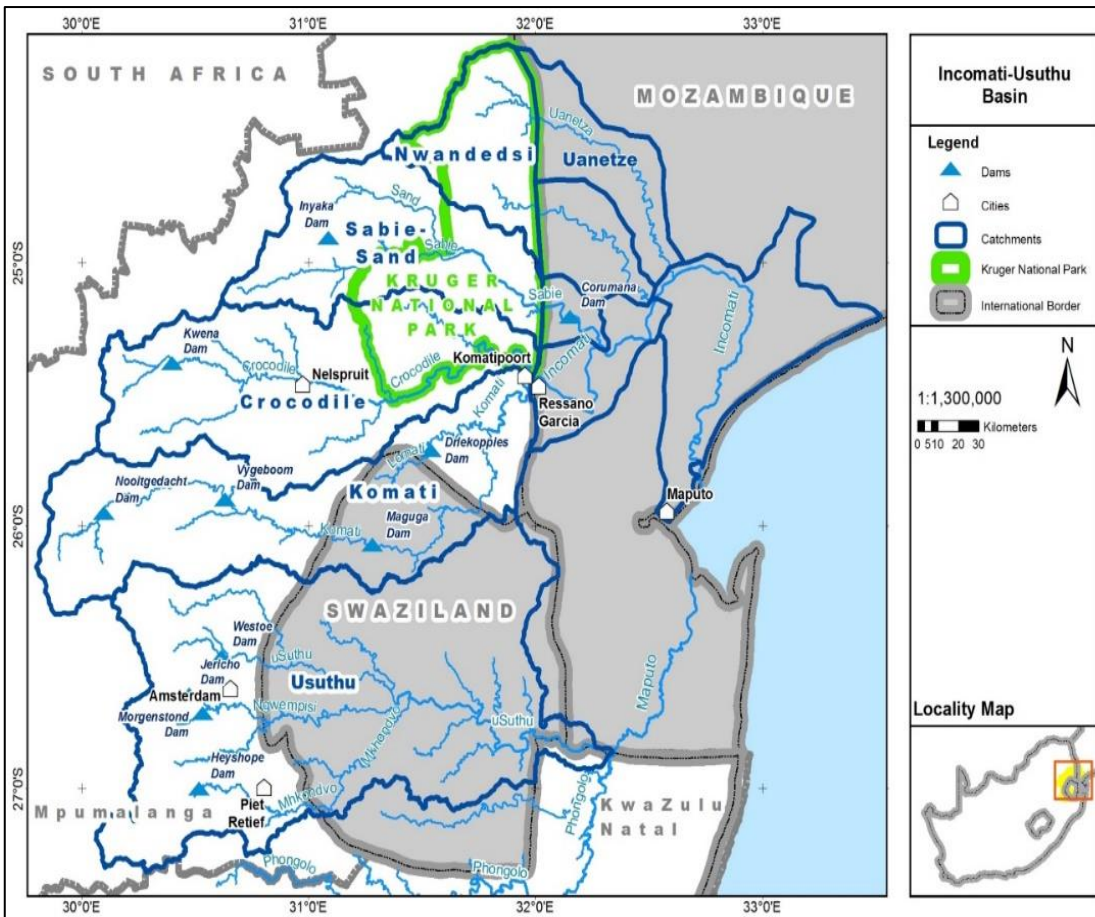
To provide Stakeholders of the Inkomati-Usuthu Catchment Management Agency (IUCMA) with the 2021/22 Annual Performance Report and 2022/23 planned targets.



INTRODUCTION

- The IUCMA was established in terms of Section 78 of the NWA.
- The IUCMA mandated for the protection, conservation, development, use and management of the water resources at a localised area.
- Stakeholder involvement is a critical component of the decentralised water resources management.
- Water use activities:
 - Transboundary International Obligations (Mozambique and eSwatini),
 - Agriculture, Forestry, Mining, Industry, Domestic, and Tourism.
- Funded through Parliamentary Grant and Water Resources Charges.
- The IUCMA is a Schedule 3A Public Entity and must comply with PFMA .

INCOMATI BASIN & INKOMATI-USUTHU WMA



- Inkomati-Usuthu Water Management Area (WMA)
- IncoMaputo River Basin over Mozambique and Swaziland
- Operated under the Interim Inco Maputo Agreement (IIMA)
- Covers Ehlanzeni DM and Parts of Gert Sibande and Nkangala DM

LEGISLATIVE FRAMEWORK

ACTIVITIES	NWA REFERENCE
Prevention and remedying of water resource pollution	Section 19
Management of emergency water resource pollution incidents	Section 20
To surrender an entitlement to facilitate a particular water use	Section 25(2& 3).
Assessment of the water uses as part of the Water Use Authorization Application	Section 21
The verification of Existing Lawful Water Use (ELU)	Sections 33 and 35
Administrative function of the water use authorization for recommendation to the Responsible Authority	Section 40
Compulsory licence application	Section 43
Late applications	Section 44
Proposed Allocation Schedules and Preliminary Allocation Schedules	Section 45 and 46
Publishing a Gazette stating that a preliminary allocation schedule has become a final allocation schedule	Section 47
Procedure for earlier renewal or amendment of licence condition	Section 52
Rectification of contraventions	Section 53
Implementation of the inherent functions: -Investigate and advise all interested persons regarding management of water resources -Development of CMS -Co-ordinate related activities of water users and water management institutions in area- -Promote community participation in water resource management	Section 80
Appointment of authorised persons to implement inspections related to compliance with the NWA which include inspections related to compliance with the NWA	Section 125
Make information available to the public in terms of Chapter 14 Part 3, Section 145, regarding floods, droughts, failing or potential failing water works, risks post by dams, levels of flood water, risks posed by water quality to life, health or property and any other matters the public needs to know.	Section 145

VISION, MISSION AND VALUES

VISION

Sufficient, equitable and quality water resources for all in the Inkomati-Usuthu Water Management Area

MISSION

To efficiently manage water resources by empowering stakeholders in our quest to contribute towards transformation by promoting equal access to water and protecting the environment.

VALUES

Integrity
Batho Pele (Stakeholder Orientation)
Accountability
Diversity
Transparency



INKOMATI-USUTHU
CATCHMENT MANAGEMENT AGENCY

IUCMA OUTCOMES

**Outcome 1:
Increased stakeholder
satisfaction**

**Outcome 2:
Enhanced human
resources capabilities**

**Outcome 3:
Maintain financial
sustainability**

**Outcome 4:
Protected water
resources**

PERFORMANCE OVERVIEW

- IUCMA achieved eighty-nine percent (89%) of its targets.
- six (06) targets were overachieved at sixty-seven (67%)
- Two (2) targets were achieved at twenty-two (22%) not achieved.
- One (1) at eleven percent (11%) target was not achieved.

IUCMA PROGRAMMES & OUTPUTS MTEF

OUTCOME	PROGRAMME	OUTPUT	OUTPUT INDICATORS	ANNUAL TARGETS		
				ESTIMATED PERFORMANCE		
				2021/22	2022/23	2023/24
Outcome 1: Increased stakeholder satisfaction	Programme 1: Administration and Governance	Effective institutions and stakeholder participation	Percent implementation of a stakeholder engagement plan	80%	85%	90%
Outcome 2: Enhanced human resources capabilities	Programme 2: Human Resources and business support	Employee safety	Disabling Injury Frequency Rate	<1	<1	<1
		Optimal employee retention	Rate of Employee turnover	6%	6%	6%
Outcome 3: Maintain financial sustainability	Programme 3: Finance	Cost control	Working ratio	≤80%	≤80%	≤80%
			Current ratio	≥1:1	≥1:1	≥1:1
		Revenue enhancement	Debt collection ratio (Toxic book)	4%	4%	-
			Debt collection ratio (Healthy book)	60%	65%	75%
Outcome 4: Protection and Use of water resources	Programme 4: Water resource management	Effective resource management	Percent monitoring of compliance to Resource Quality Objectives	≥90%	≥90%	≥95%
			Percent monitoring of compliance to international obligations	≥90%	≥90%	≥95%
		Water use authorisations	Percentage of water use authorisations processed within the regulated timeframe	80%	80%	80%
		Water use database management	Percentage of approved water use authorizations registered on WARMS	90%	90%	95%
		Regulative compliance	Percentage of activities monitored for compliance, and enforcement action taken against non-compliant activities	90%	90%	95%

2021/22 Annual Performance

OUTCOME	PROGRAMME	OUTPUT	OUTPUT INDICATORS	ANNUAL TARGET 2021/2022	ANNUAL PERFORMANCE
Outcome 1: Increased stakeholder satisfaction	Programme 1: Administration and Governance	Effective institutions and stakeholder participation	Percent implementation of a stakeholder engagement plan	80%	100% (164/164)
Outcome 2: Enhanced human resources capabilities	Programme 2: Human Resources and business support	Employee safety	Disabling Injury Frequency Rate	<1	0%
		Optimal employee retention	Rate of Employee turnover	6%	0%
Outcome 3: Maintain financial sustainability	Programme 3: Finance	Cost control	Working ratio	80%	106%
		Revenue enhancement	Debt collection ratio	25%	32.9% (R37,869,940.05/R115,069,122.97)
Outcome 4: Protection and Use of water resources	Programme 4: Water resource management	Effective resource management	Percent monitoring of compliance to Resource Quality Objectives	90%	100% (23/23)
			Percent monitoring of compliance to international obligations	90%	100% (10/10)
		Water use authorizations	Percentage of water use authorizations processed within the regulated timeframe	90%	95.2% (120/126)
		Regulative compliance	Percentage of activities monitored for compliance, and enforcement action taken against non-compliant activities	90%	265% (212/80)

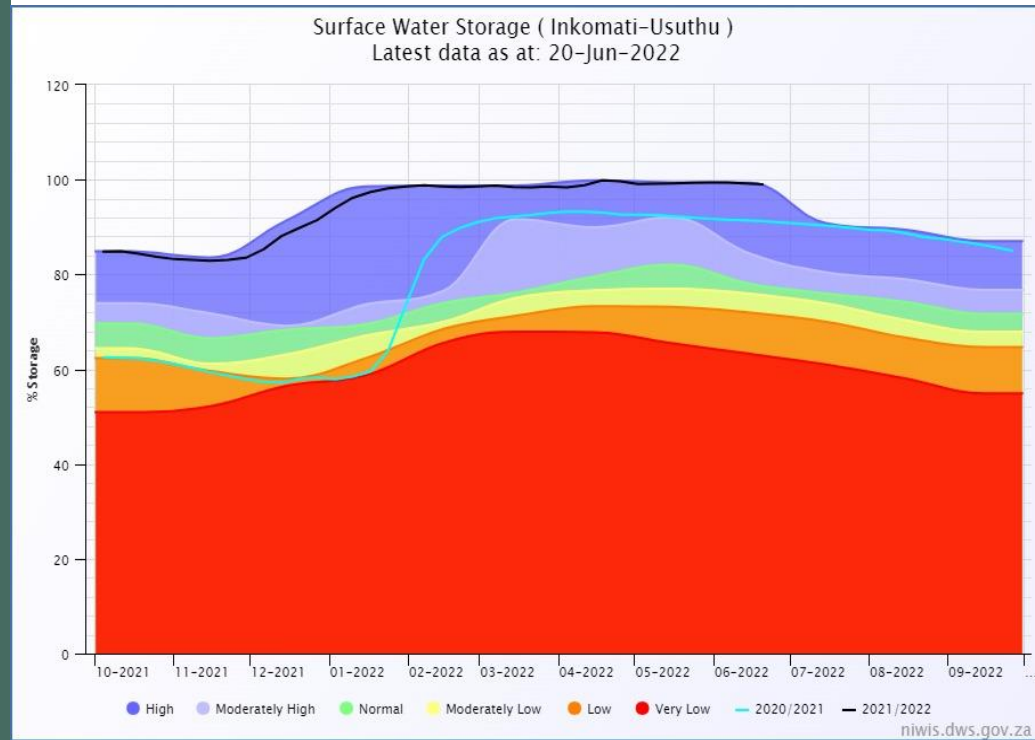
IUCMA PROGRAMMES & OUTPUTS 2022/23

OUTPUT INDICATORS	ANNUAL TARGET	QUARTERLY TARGETS			
	2022/23	QUARTER 1	QUARTER 2	QUARTER 3	QUARTER 4
Percent implementation of a stakeholder engagement plan (technical, governance, support and finance)	80%	80%	80%	80%	80%
Disabling Injury Frequency Rate	<1	<1	<1	<	<1
Working ratio	≤80%	≤80%	≤80%	≤80%	≤80%
Current Ratio	≥1:1	≥1:1	≥1:1	≥1:1	≥1:1
Debt collection ratio (Toxic Book)	4%	1%	2%	3%	4%
Debt collection ratio (Healthy Book)	60%	15%	30%	45%	60%
% Monitoring of compliance to Resource Quality Objectives	90%	90%	90%	90%	90%
% Monitoring of compliance to International Obligations	≥90%	≥90%	≥90%	≥90%	≥90%
Percentage of water use authorizations processed within the regulated timeframe	90%	80%	80%	80%	80%
Percentage of issued water use authorizations registered on WARMS	90%	90%	90%	90%	90%
Percentage of activities monitored for compliance	90%	90%	90%	90%	90%
Record of enforcement action taken against the non-compliant facilities/ users	100%	100%	100%	100%	100%

GOVERNANCE

- The Governing Board has committees: Executive Committee and the Audit Committee, Risk Committee and ICT Committee.
- Providing oversight all meeting of strategic outcomes and meet quarterly
- Unqualified Audit report 2021/2022

WATER RESOURCE MANAGEMENT



IUCMA Water Early Warning - Data Analyses and Reporting Engine

IUCMA Water Early Warning
Data Analyses and Reporting Engine
version: 4.1.8122.6215

Module : PostgreSQL
Web uploads enabled.
File based indicators enabled.
FloodWatch indicators disabled.

Latest Assessments

Floods

Drought

Water quality

Basin	Assessment approved	Upper Komati	Crocodile	Sabie-Sand	I'wanetsi	Upper Usuthu	Lower Komati
IUCMA	4/19/2022 1:47:15 PM	All Clear	All Clear	All Clear	All Clear	Flood Watch	All Clear
IUCMA	4/19/2022 2:12:54 PM	Normal Conditions	Normal Conditions	Normal Conditions	Normal Conditions	Normal Conditions	Normal Conditions
IUCMA	4/4/2022 4:53:34 AM	Water Quality Watch	All Clear	All Clear	Not assessed	Not assessed	Not assessed

DAM LEVELS IN WMA AT 07/2022

Dam Name	28 March 2022 - % FSC	1 July 2022 - % FSC	Status	Use
Da Gama Dam	100.3 %	100.2 %	Decrease	Irrigation
Driekoppies Dam	100.6 %	100.5 %	Decrease	Domestic and Irrigation
Inyaka Dam	84.9 %	86.8 %	Increase	Domestic and Irrigation
Klipkopjes Dam	100.0 %	100.0 %	Constant	Domestic and irrigation
Kwena Dam	100.4 %	100.3 %	Decrease	Domestic and Irrigation
Longmere Dam	101.1 %	100.7 %	Decrease	Domestic and Irrigation
Nooitgedacht Dam	100.7 %	99.71 %	Decrease	Strategic
Primkop Dam	101.2 %	101.4 %	Increase	Domestic and Irrigation
Vygeboom Dam	100.7 %	101.0 %	Increase	Strategic
Witklip Dam	100.4 %	100.3 %	Decrease	Domestic and Irrigation
Heyshope Dam	100.3 %	100.4 %	Increase	Strategic and Domestic
Morgenstond Dam	98.8 %	100.26 %	Increase	Strategic
Westoe Dam	99.9 %	95.7 %	Decrease	Strategic and Domestic
Jericho Dam	100.3 %	100.2 %	Decrease	Strategic and Domestic
Lomati Dam	102.8 %	100.0 %	Decrease	Domestic

WATER RESOURCE MANAGEMENT

- 117 water use authorisations were processed within regulated time frame
 - 51 Licenses and 58 General Authorizations The IUCMA participate in local (CMF) & transboundary water resource management forums
 - Joint Water Commission, Ara-Sul Stakeholder Forum, KJOF, and the REMCO
- Participation in the DDM for IDP development
- Establishment of Water User Associations (WUAs) and Irrigation Boards (IB) disestablishment has commenced
- Support to small scale farmers

WATER RESOURCE MANAGEMENT

Current projects (2022/23)

- Groundwater strategy implementation
- Water Use Efficiency on irrigated crops
- Water Use Audit, Water User Update and Revenue Strategy
- Alien Vegetation Removal
- HDI Support Project
- Remote Eutrophication monitoring
- Waste Discharge Charge System pilot within the Crocodile Catchment

KEY FOCUS AREAS

- Verification and Validation
- Water Allocation Plan
- Monitoring and Enforcement
- Data cleansing
- Debt collection
- ICT Systems
- Policies